



CalPro

Calibration Procedures for use with GAGEtrak 7

Installation Guide



CalPro

Calibration Procedures for use with GAGetrak 7

Installation Guide



CyberMetrics Corporation
1523 West Whispering Wind Drive, Suite 100
Phoenix, Arizona 85085
USA

Toll-free: 1-800-776-3090 (USA)
Phone: 480-295-3465
Fax: 480-922-7400

www.cybermetrics.com

Table of Contents

CalPro Installation.....	4
Importing the CalPro Procedures into GAGetrak	6
Accessing the CalPro Procedures Word Document	7

CalPro Installation

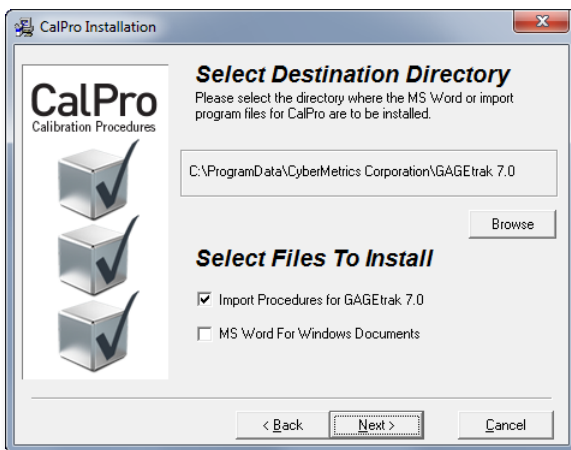
An indispensable asset for any calibration department, CalPro is a database of step-by-step calibration procedures for more than sixty commonly used inspection gages, instruments and reference standards. Any or all of the CalPro procedures can be imported into GAGetrak using the import utility or printed as hard copy from the Word document included on the CalPro media.

1. To begin installation, double-click the SETUP.EXE file on the provided media; the **Welcome** screen will appear. Close any other Windows programs that are running and click **Next**.



2. In order for the CalPro procedure import tool to run after installation, the installation directory for CalPro must be the same as your GAGetrak 7 (or GAGetrak 7 FDA) installation directory. If you chose an installation directory other than the default location shown, browse to the directory and then click **OK** on the confirmation message; the destination directory will then be shown in the **Select Destination Directory** window. Otherwise, leave the default location as-is.

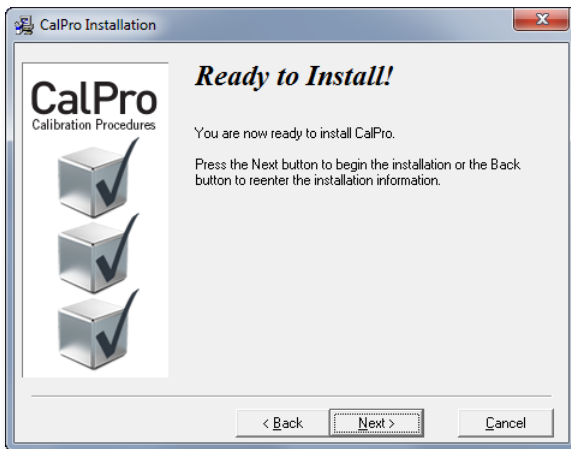
Now, select the files you want to install. The first option will import the procedures into your GAGetrak database; the second option installs a Word document which includes all of the CalPro procedures; this file can be used without GAGetrak as a library of work instructions for inclusion within your company's Quality Manual. After making your selections, click **Next**.



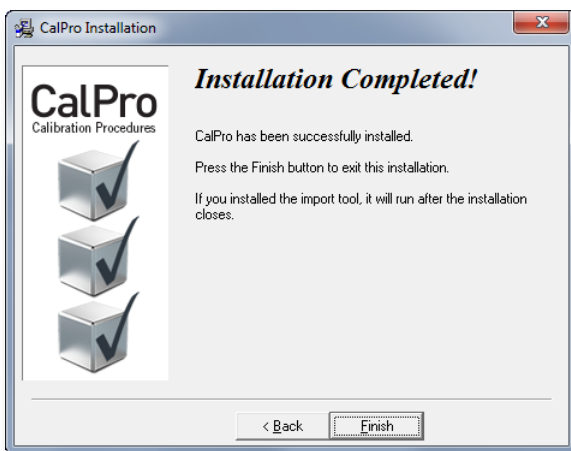
3. In the **Select User Profile** window, select **Common Users Group** to make CalPro accessible to all users of the workstation. If you want only the current user to be able to access CalPro, select **Current User Only**. Click **Next**.



4. You are now ready to install CalPro; click **Next**.



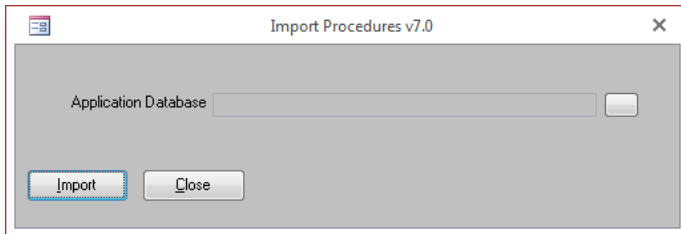
5. Successful installation of CalPro will be confirmed; click **Finish** to exit the installer.



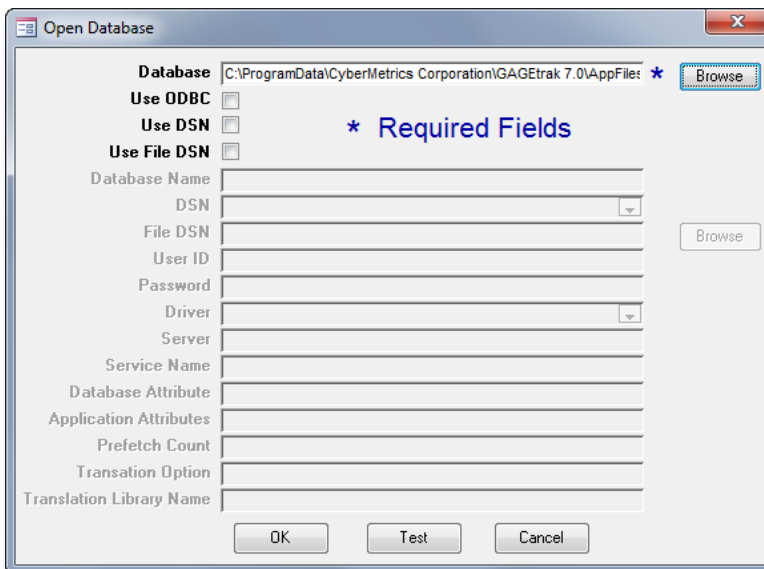
Importing the CalPro Procedures into GAGetrak

If during installation you chose to import the procedures into your GAGetrak database, the **Import Procedures** window may automatically launch immediately after installation. If it does not automatically launch, you can launch it from the CalPro icon in the GAGetrak 7 program group (accessed from the Windows Start button). If you don't see a CalPro icon there, then in Windows Explorer, go to C:\ProgramData\CyberMetrics Corporation\GAGetrak 7.0\AppFiles (or other GAGetrak 7 installation directory, if you did not use the default location) and double click the **Cpp7.accdb** file; this will open the **Import Procedures** window.

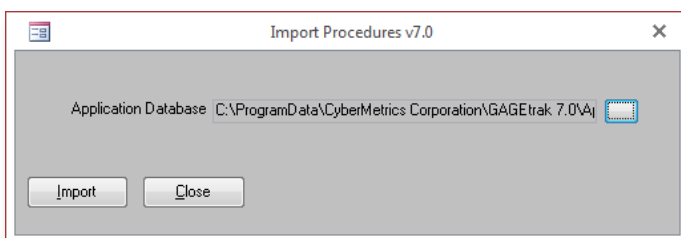
1. In the **Import Procedures** window, click the button to the right of the **Application Database** field.



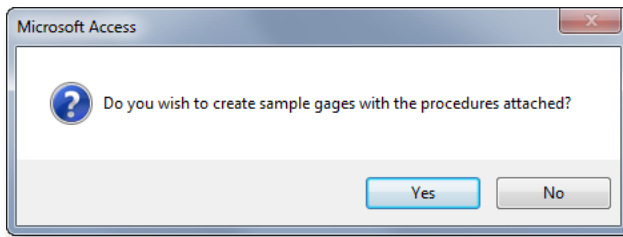
2. The **Open Database** window will open; browse to and select your GAGetrak 7 database and then click **OK**.



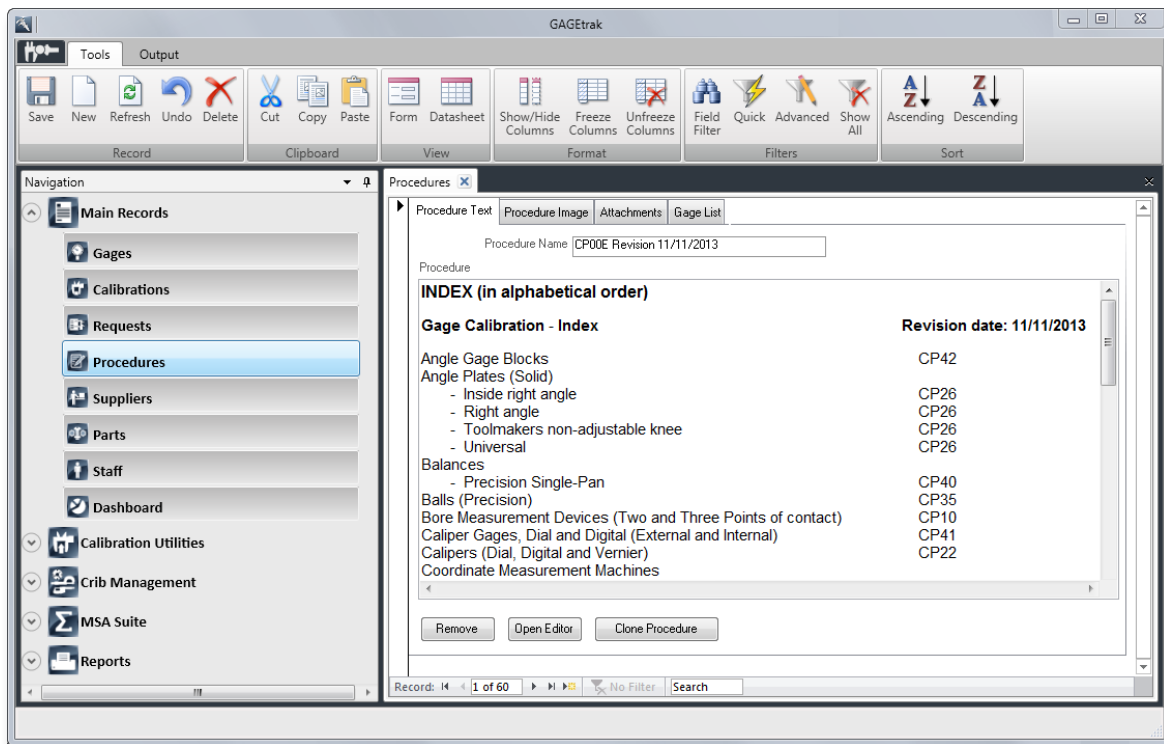
3. Back on the **Import Procedures** window, the **Application Database** field now displays the location of your GAGetrak database; click **Import**.



4. You will be asked if you want to create sample gages in the database. If you are installing CalPro into a sample database, you can click **Yes**; however, if you are installing CalPro into a working database, click **No**.



5. A message will display confirming that the import is complete; click **OK**.
6. Close the **Import Procedures** window.
7. Launch GAGetrak and navigate to **Main Records -> Procedures**. The CalPro procedures have been successfully imported and are ready for use.



Accessing the CalPro Procedures Word Document

If during installation, you chose to install the CalPro Procedures Microsoft Word document, then in Windows Explorer, go to C:\ProgramData\CyberMetrics Corporation\GAGetrak 7.0\AppFiles (or other installation location if you did not use the default location) to locate the **CalPro.docx** file.

It gets even better.

This line of additional products is yet another reason
GAGetrak is the #1 calibration management software solution in the world.

Streamline your workflow, improve productivity and reduce costs - contact us today to place your order.



Report Viewer is an easy-to-use desktop utility that connects to your GAGetrak database(s), allowing you to generate thorough reports to analyze and stay ahead of trends, forecast workloads, improve efficiency and minimize costs. Report Viewer offers the convenience and simplicity of accessing only the information you need, allowing you to have more control over your quality management program. Ask about Report Viewer Pro for custom reporting.



The Calibration Label Kit lets you create bar-coded labels for all of your equipment directly out of GAGetrak. This compact Brother® printer comes complete with cables, label design software and everything else you'll need to get started. The harsh-environment labels are resistant to moisture, temperature extremes, industrial chemicals, UV and abrasion and are available in a variety of sizes and colors.



CyberSensor is an automated ambient temperature and humidity sensor that communicates with GAGetrak via a USB connection. When a calibration is passed, the Temperature and Humidity fields within the GAGetrak calibration record are automatically populated with CyberSensor data, making your calibration documentation even more complete. Improve efficiency and the reliability of your calibrations with CyberSensor's accurate temperature and relative humidity monitoring.



GAGetrak's Total Calibration Solution (TCS) includes everything else you need for ISO 9000 and ISO/TS 16949 calibration compliance at a special package price. TCS includes GAGetrak Software, a Calibration Label Kit, CalPro Calibration Procedures and an Annual Maintenance and Support Agreement (MA). Double your efficiency with TCS+ which includes all of the contents of TCS plus an additional GAGetrak license and MA.



The GAGetrak Validation Kit helps you establish and document FDA validation of your GAGetrak software. It includes a validation guide which serves as the basis by which the software is validated and a validation database to assist you with testing the software's functionality, preparing your SOPs for GAGetrak, training the users of the software and documenting the formal validation report.