

FaciliWorks® 8i

MAINTENANCE MANAGEMENT SOFTWARE

Reduce Maintenance Costs
SMART.

Process Tasks & Schedules
FAST.

Optimize Inventory & Purchasing
COMPETITIVE.

Improve Reliability
COMPETITIVE.

Store & Retrieve Records
FAST.

Implement Standards & Compliance
SMART.

The scalable solution to your maintenance management needs.



Fast, Smart, and Competitive...

FaciliWorks 8i CMMS solution reduces downtime, tracks histories, analyzes trends, and optimizes your company's inventory. With a newly re-engineered product line utilizing Microsoft's .NET technology, FaciliWorks 8i offers the highest quality, cutting-edge software product available for the facilities maintenance marketplace. FaciliWorks 8i gives you the tools you need to track and schedule your maintenance tasks, personnel, assets, parts, and supplies effectively. You can easily build preventative maintenance schedules and generate both corrective and scheduled work orders. Easy to use and set up and affordably priced, FaciliWorks 8i is available in both Professional and Enterprise versions to improve your business by:

- Optimizing inventory & purchasing
- Processing tasks & schedules more efficiently
- Reducing maintenance costs
- Implementing standards & compliance
- Storing & retrieving records quickly and easily
- Improving reliability and ensuring greater uptime

Reducing your costs through better optimized scheduling and ensuring equipment uptime will make your organization more competitive, get your work done faster, and help you understand your business better. Like all CyberMetrics quality products, FaciliWorks 8i grows with your organization, from a single user on one computer to several users on a local area network. Options like PDA software, the Maintenance Label Printer, SafetyPro, and TaskPro provide even more flexibility and power. Call today to take advantage of the multi-faceted benefits that FaciliWorks 8i has to offer.



FaciliWorks' interface, modeled after the familiar Microsoft Outlook, is easy to learn and easy to use.

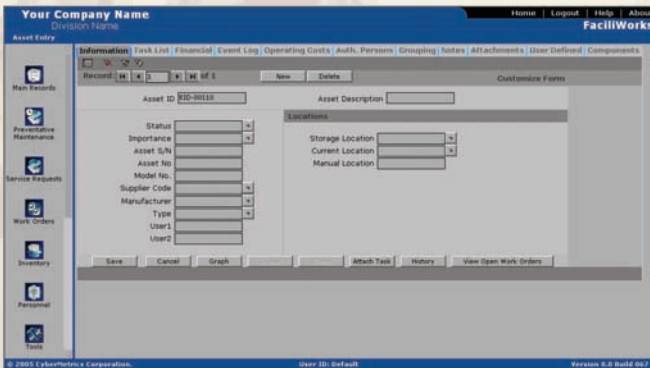
FaciliWorks 8i Key Product Benefits

ASSET TRACKING

FaciliWorks uses the term “asset” to identify any item that may require maintenance or tracking, such as a piece of equipment, vehicle, system, project, facility, and/or location.

FaciliWorks 8i:

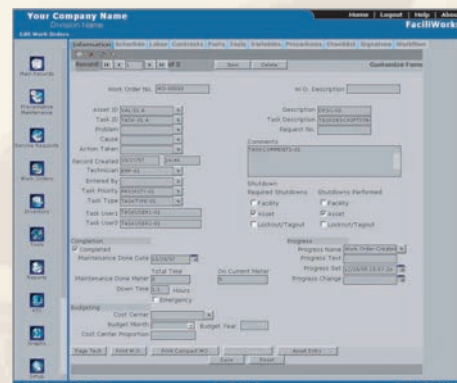
- Maintains detailed records on all assets, tools, parts, and personnel
- Tracks work instructions, repair procedures, and task checklists
- Generates purchase orders; tracks and optimizes inventory
- Component hierarchies allow parts and sub-assemblies to be tracked and maintained
- Authorized persons tracking
- Track warranties, service contracts, and leasing payments
- Clone function duplicates records with all associated tasks, parts, and tools



FaciliWorks' tabbed data entry boxes are organized logically for easier information entry and retrieval. Drop-down menus help ensure consistency in data entry.

SERVICE REQUESTS & WORK ORDERS

- Service requests can be created, edited, or approved and made into work orders automatically
- Advanced scheduling to make sure you are balancing your workload among your resources*
- Automatic task scheduling and seasonal maintenance refine your work schedule
- Unique Assets Schedule Grid shows status of all your assets and is integrated into the scheduling module*
- Ability to track all inventory and labor hours including total hours, regular hours and overtime for your employees



*Available only with FaciliWorks 8i Enterprise version.

Route PM*

Perform checks on multiple Assets at once.
Prioritize or set the order to minimize travel time.

Multitask PM*

Perform multiple PM tasks on one Asset at a time.

Global Settings

Global settings are used for easy portability and provide every user the same set up.

Personal Settings

Personal settings are used so that each user can have customized settings for a more efficient application.

Daily Asset Schedule*

Define the schedule for when an Asset is available for maintenance. View the detailed schedule for each Asset and add items such as calibration, cleaning or unavailable.

Monthly Asset Schedule*

Display an overview of monthly schedules for multiple Assets at one time.
Drill down to view a detailed schedule for a particular Asset.

Daily Staff Schedule*

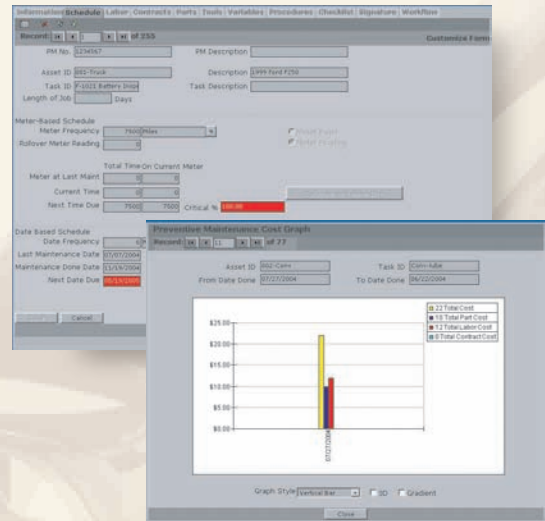
Define employee schedules to perform maintenance based on availability. View the detailed schedule for each employee and add items like meetings, time-off, or unavailable.

Monthly Staff Schedule*

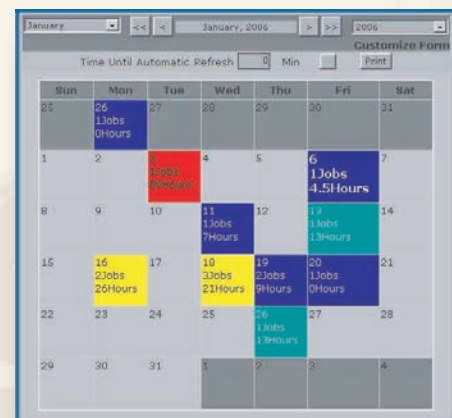
Display an overview of monthly schedules for multiple employees at one time.
Drill down to view a detailed schedule for a particular employee.

Workflow*

Generate customized Workflow for Work Orders, PMs, Service Requests or Purchase Orders. A Workflow Step can be used to email employees, require Approval, or make a decision based on field values. Emails and Approvals can be based on the Requester, a supervisor, authorized users, Issued To user, Asset Grouping list, Work order or PM Technician, Work Order or PM Labor employees or a user defined list.



FaciliWorks' workload calendar displays your scheduled workload, with user-definable color-coding to alert you at a glance to potential trouble spots.



* Available only with FaciliWorks 8i Enterprise version.

Enhance FaciliWorks 8i with these optional products:

FaciliWorks PDA Software

PDA support offers convenient paperless electronic work order that can be used with a bar-code scanner. Perform maintenance in the field and then transfer back to your database.



Maintenance Label Printer

Label Printer lets you print durable adhesive labels with bar codes for use in tracking assets.



SafetyPro

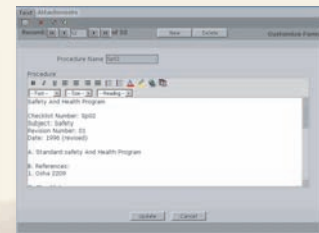
A comprehensive database of step-by-step safety checklists designed for use with FaciliWorks.

TaskPro

A comprehensive database of step-by-step maintenance procedures designed for use with FaciliWorks.

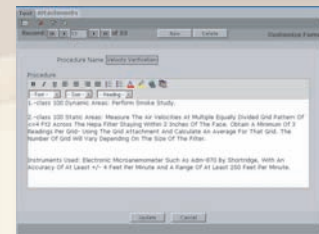
FaciliWorks Web Reporter

Generate FaciliWorks reports anytime, anywhere, using your Web browser.



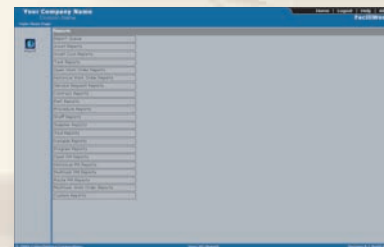
Service Request Module

This module runs as a stand-alone application and lets anyone on your network enter their own service requests.



Web Service Request Module

Allows authorized users to enter service requests through their Web browser.



Custom Toolkit

Customize FaciliWorks to meet your needs.

Validation Kit

Establishes and documents FDA validation of your FaciliWorks.

FaciliWorks Training

Hands-on training workshop that takes you step-by-step through planning, preparation, set up, use, and successful operation of FaciliWorks.

Custom Services

Call us for custom programming, data import services, and extended software support service needs.

CyberMetrics Corporation

Founded in 1988, CyberMetrics Corporation is a leading developer and worldwide supplier of management software products and services. CyberMetrics delivers complete solutions that thousands of managers, engineers and technicians rely on every day to improve quality, save time, and reduce costs. CyberMetrics is dedicated to providing superior open-standards software solutions that are affordable, scalable, and easy to deploy and manage.

Judge Us by the Company We Keep

Since 1988, companies from every industry, both large and small, have been using our software to help manage their operations, reduce costs, and improve quality.

With more than 10,000 users at over 6,000 locations around the world, CyberMetrics applications have been used in virtually every type of industry and organization.

Our client list includes hundreds of well-known companies like Bausch & Lomb, Ford, General Electric, Office Depot, Medtronics, and Jones Lang LaSalle.



System Requirements

Server

- Windows 2000 Server with IIS or higher
- MS SQL 2000/MSDE 2000 or higher
- Hard disk with 200 MB of free space for program files and 100 MB of free space for a typical database
- Pentium 4 - 2.4 GHz CPU or higher required
- 1 GB RAM or higher required Workstation
- IBM PC or 100% compatible computer
- Pentium 4 - 1.4 GHz CPU or higher required
- Internet Explorer 6 or higher

SALES

1-800-777-7020

SUPPORT

(480) 922-7300

WORLD WIDE WEB

www.cybermetrics.com

E-MAIL

sales@cybermetrics.com

support@cybermetrics.com

